

# Automated Fare Collection Solutions

## GATE VALIDATOR

### About Kontron Transportation – Member of the S&T Group

Kontron Transportation is a leading global supplier of end-to-end communications solutions for mission-critical networks. Its portfolio includes GSM-Railways, FRMCS (future railway mobile communication system), TETRA, DMR, LTE solutions for mission critical networks as well as mobility solutions for the public transport sector, such as Automated Fare Collection and Mobile Ticketing. Kontron Transportation is enabled with the entire service value chain, from planning, developing and producing to deploying, integrating, maintaining and operating.

Kontron Transportation invests in research and development and is driving the evolution into the next generation of broadband solutions for mission-critical networks, for instance as an associated member of the European research initiative Shift2Rail.

Kontron Transportation is part of S&T group and headquartered in Vienna (Kontron Transportation Austria AG) with main subsidiaries in Belgium, France, Germany, Portugal, Spain, the Czech Republic and United Kingdom.

For more information, please visit: [www.kontron.com](http://www.kontron.com)

### YOUR CONTACT

**Kontron Transportation**  
Belgium NV

Twin Squares, Culliganlaan 1A  
1831 Diegem, Belgium  
Tel.: +32 2 306-1011  
Fax: +32 2 306-1099  
info@kontron.com

[www.kontron.com](http://www.kontron.com)

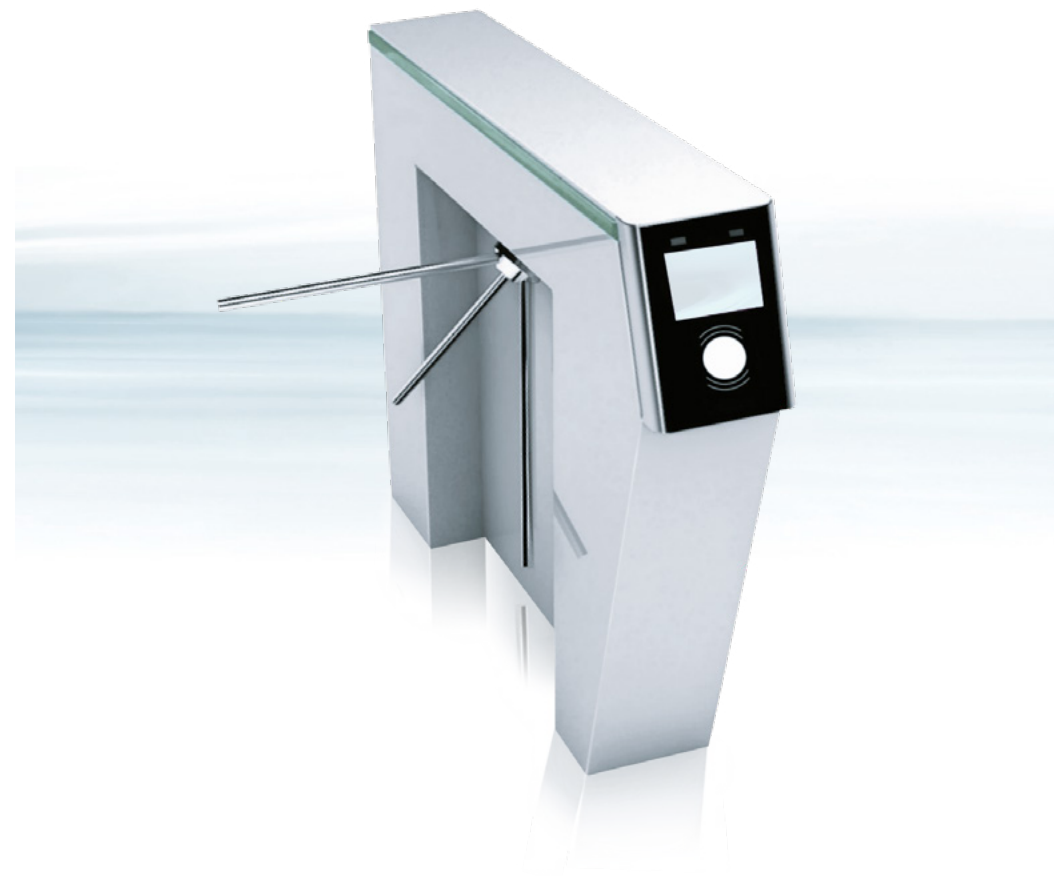
### GLOBAL HEADQUARTERS

**KONTRON S&T AG**

Lise-Meitner-Str. 3-5  
86156 Augsburg, Germany  
Tel.: +49 821 4086-0  
Fax: +49 821 4086-111  
info@kontron.com

[www.kontron.com](http://www.kontron.com)

Copyright © 2020 Kontron S&T AG. All rights reserved. All data is for information purposes only and not guaranteed for legal purposes. Information has been carefully checked and is believed to be accurate; however, no responsibility is assumed for inaccuracies. Kontron and the Kontron logo and all other trademarks or registered trademarks are the property of their respective owners and are recognized. Specifications are subject to change without notice. TechSpecs MG760 - 20200422 - WMH



- ▶ VALIDATORS DESIGNED FOR USE IN PUBLIC TRANSPORT STATION ENVIRONMENTS
- ▶ SUITABLE FOR INTEGRATION INTO A WIDE VARIETY OF GATES
- ▶ SUPPORTING VARIOUS CONTACTLESS MEDIA AND BARCODES

POSSIBILITIES START HERE

# GATE VALIDATOR



## MG760

<b>OPERATING SYSTEM</b>	LINUX
<b>ELECTRICAL INTERFACES</b>	Ethernet RS232 RS485 Audio line out Digital I/O USB
<b>HUMAN INTERFACES</b>	5.7" colour display Touchscreen (option) Buzzer LED indicators
<b>MEDIA INTERFACES</b>	Various contactless cards and contactless bank cards Barcodes (option)
<b>POWER</b>	Input 9 to 36 VDC Nominal 24 VDC



Our robust contactless gate validator seamlessly integrates in a variety of gates and turnstiles. Its various external hardware interfaces make it possible to integrate to both new and existing gates or turnstiles, which is certainly an added value for the MG760 compared to its competitors.

With its powerful processor, the Kontron MG760 delivers an industry leading validation experience for your customers. It offers excellent transaction processing performance, maximizes passenger throughput and minimizes waiting times.

► **High-end Linux based contactless metro gate validators**

