

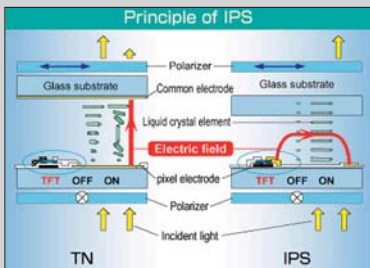
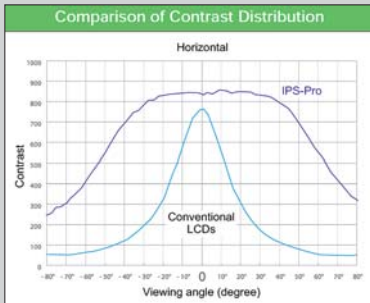
# EP & Dee

Electronics Products & Design – eastern europe

## Hitachi's IPS Family

The Hitachi Europe Ltd., Display Group features more and more "IPS-technology" for their TFT products.

"IPS" stands for In-Plane-Switching and means a tremendous increase of contrast and colour saturation measured under wide viewing angles in comparison with displays of conventional LCD technology. The reason for the reduction of contrast and colour inversion beyond of the optimum viewing angle is based in the arrangement of the liquid crystal (LC). Through restructuring of the electrodes and a connected horizontal alignment of the electrical field, Hitachi was enabled to decrease the mentioned disadvantages. Using the latest generation, the so called "IPS-pro" technology, Hitachi even increased the efficiency of the backlight, the black level and the viewing angle again. Almost 30% more light can be transmitted through the cells without any change of the backlight, or vice versa the power consumption can be decreased by aiming for the same brightness.



At present "IPS-technology" is featured for the following panels:

TX23D12VM0CAA: 9", WVGA 800(H)x480(V)  
 TX31D58VM0CAA: 12" WVGA 800(H)x480(V)  
 TX43D55VM0BAA: 17", WXGA 1280(H)x768(V)  
 TX43D57VC0CAA: 17", SXGA 1280(H)x1024(V)  
 TX54D13VC0CAA: 21.3", UXGA 1600(H)x1200(V)  
[www.msc-ge.com](http://www.msc-ge.com)

## The PICDEM™ Touch Sense 2 Demo Board

Microchip announces the PICDEM™ Touch Sense 2 Demo Board (Part # DM164128) for capacitive touch-sensing applications. The easy-to-use board comes with the royalty-free mTouch™ Sensing Solution Software Development Kit (SDK) and is populated with a 16-bit PIC24FJ256GB110 microcontroller (MCU), which features an integrated Charge Time Measurement Unit (CTMU) peripheral for fast capacitive touch sensing. This is also the world's first 16-bit MCU family with USB On-The-Go (OTG). The board and supporting materials provide a complete platform for implementing capacitive touch-sensing interfaces, without the need for external components. Additionally, with the PIC24FJ256GB110 family's rich peripheral integration and 256 Kbytes of Flash memory, and Microchip's broad portfolio of free and low-cost software libraries, embedded designers can use a single MCU to cost effectively implement a wide variety of additional user-interface functions, including QVGA



touch-screen displays, speech-based audio prompts and USB connectivity. Many applications in the consumer, appliance, medical, industrial and automotive markets are rapidly adopting capacitive touch-sensing technology for reasons of aesthetics, maintenance, cost and cleanliness. Expanding on Microchip's existing 8-bit PIC® microcontroller-based mTouch development tools for capacitive touch, and equipped with capacitive touch-sensing keys and sliders, the board allows designers to evaluate this interface in their applications.

[www.microchip.com/mtouch](http://www.microchip.com/mtouch)

Kontron ThinkIO-Duo Embedded IPC with multi-core performance delivers ultra-fast image processing for industrial vision control applications

## Soccer player versus machine

*The Fraunhofer Institute for Material Flow and Logistics (IML) in Dortmund, Germany has developed a robot goalkeeper with lightning fast reflexes that is a match for even the best professional footballers. RoboKeeper's brain is the ThinkIO Embedded IPC from Kontron that offers dual-core processing performance as well as a range of standard PC and industrial interfaces for easy and cost-effective implementation of industrial vision control applications.*



The 1.96 m goalie made from foam with an aluminium "backbone" may not look nimble, but the RoboKeeper developed by the Fraunhofer Institute (IML) in Germany has lightning fast reflexes and can stop almost any shot from the penalty spot, even banana shots. Even though RoboKeeper is an entertainment attraction, it is an impressive benchmark for multi-core, vision-based measurement and control applications: Image processing software calculates exactly where the ball will cross the goal line and provides an angle value to the servomotor that tilts the goal keeper to either the left or right in order to parry the shot wide of the goal. A ball travelling at 100 km/h from the penalty spot reaches the goal in 300 msec, so RoboKeeper has to react fast. The Kontron ThinkIO-Duo Embedded IPC equipped with an Intel® Core™ Duo processor provides 2 x 1.2 GHz processing power. A powerful servomotor and transmission typically found in avionics applications accelerate the goal keeper at up to 212 m/s<sup>2</sup> – 17 times faster than a Formula 1 racing car - to leave even professional footballers dumbfounded. → [Page 2](#)

→ Page 1

**Parallel processing for lightning fast reactions**

Two digital cameras mounted behind the goal line each take around 40 pictures per second. This enables the system to follow the flight curve of the ball from the moment it is struck. Each camera has its own connection to one of the ThinkIO-Duo's two Gigabit Ethernet ports. Using separate ports avoids packet collisions and enables two images to be transmitted simultaneously using the fast GigE Vision™ standard. With each color picture consisting of 640 x 480 pixels and 2 bytes per pixel (614,400 bytes per picture), the cameras deliver a total of 47 Mbytes of uncompressed information every second (2 x 40 x 614.400).



The Kontron ThinkIO-Duo provides standard PC connectivity as well as industrial fieldbus and industrial Ethernet interfaces in a single, ultra-compact unit.

The sophisticated image processing software written in C++ by IML runs on the ThinkIO-Duo under Linux 2.6.23.1 (SMP) with Fedora Core 8 and ThinkIO extensions. It takes full advantage of the parallel processing capabilities of the ThinkIO-Duo by assigning the respec-

tive pictures from each camera to one of the two processing cores for Symmetric Multi-Processing (SMP). The software identifies surfaces, so-called blobs (Binary Large Objects), and classifies them according to size, color and shape. When it finds two appropriate blobs, it calculates the 3-D position of the ball. The speed of the ball is found by comparing its position in two consecutive pictures. Once the position and speed are known, it is possible to calculate where the ball will cross the goal line. The calculation even takes the flight curve of the ball into account, enabling RoboKeeper to cope with curling shots. In just 1-2 msec, the ThinkIO has calculated the angle through which RoboKeeper has to move in order to intercept the ball and sends this value to the motor controller via the ThinkIO-Duo's CAN interface.

**Cost-effective parallel processing**

Parallel processing is necessary for achieving the required processing speed. Initial trials with a single core processor ran into trouble since images arriving from the cameras could not be read from the network buffer fast enough, resulting in the loss of individual pictures. In order to implement the system with single-core embedded processors, IML would have required at least three separate CPU boards - two for parallel processing of the image data and another for load balancing - as well as additional I/O cards for fieldbus connections. This would have meant a customized rack mount system and a considerable amount of integration and programming work. The ThinkIO-Duo, on the other hand, offers dual-core performance with no significant increase in thermal design power as well as standard PC and industrial interfaces in a single, ultra compact off-the-shelf system for easy implementation and faster project implementation. "The Kontron ThinkIO-Duo offered exactly what we needed - dual-core performance for fast image processing together with all the required PC and industrial interfaces," declares Thomas Albrecht, head of control systems at IML. "Since there was no need for extra expansion cards, implementation was straightforward and cost-effective."

**From soccer to industrial applications**

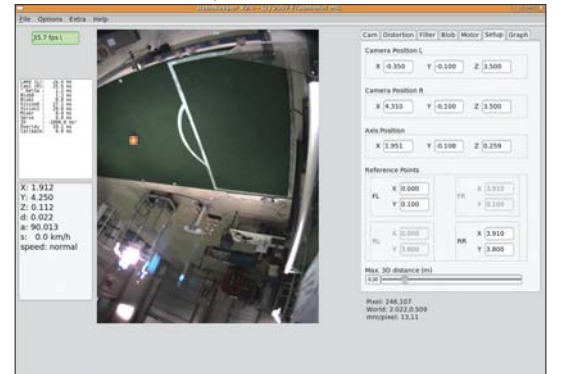
RoboKeeper is a reference project for industrial vision-based applications that require fast image processing combined with a range of standard PC and industrial interfaces. Typical examples are robotic systems that use complex object recognition algorithms to identify and locate the position of goods, for example, on fast moving conveyor belts and deliver output commands to servo motors. Since the dual-core ThinkIO-Duo is fast enough to calculate the changing position of objects in non-linear motion, it enables implementation of machine vision systems on both straight and curved sections of industrial processing lines.

The completely integrated platform significantly reduces time to market, allowing customers to focus on software development and system integration. Optional WAGO 750/753 I/O clamps can be directly connected as well as Profinet, Profibus or CANopen fieldbus devices.



Along with high computing performance and industrial Ethernet connectivity, this passively-cooled IPC offers internal Flash (512MB / 2GB), a CompactFlash

In the RoboKeeper application, the standard PC interfaces are used to connect the digital cameras (Ethernet) and HMI (DVI) that is required for setting up the system at different venues. The industrial interfaces are for connecting the servomotor (CAN) and adjusting RoboKeeper's speed: To give everybody a fair chance of scoring a goal, RoboKeeper has 7 speed settings - from novice to professional. These are adjusted using a handheld controller directly connected to the ThinkIO's modular I/O system. Since there is no need for extra PCMCIA cards, implementation is fast, easy and cost effective.



The HMI connected via the ThinkIO-Duo's DVI port enables technicians to adjust parameters according to environmental conditions

For industrial applications that require complex PLC operations, the optional IEC 61131-3 SoftPLC package available for OEM configurations includes editors for developing controller application nodes, integrated compilers for generating native application codes for the controller and numerous diagnostic and commissioning functions. All I/O nodes are configurable on the software side, making all I/O clamps plug & play. Using an optionally available third party OPC server reduces programming time even further by providing full API support for the transfer of plant data and operating commands between automation equipment and a company's IT infrastructure (e.g. ERP and database systems).

**On tour**

With its robust stainless steel housing, maintenance free design and up to 2 GBytes of onboard Compact Flash instead of rotating media, the rugged and fanless Kontron ThinkIO-Duo also provides the shock and vibration resistance to cope with harsh environments. This enables it to easily cope with the frequent mounting, dismounting and transportation as RoboKeeper moves from venue to venue as well as in industrial environments. More information about the project as well as tour dates can be found at: <http://www.robokeeper.de> [www.kontron.com](http://www.kontron.com)

**The Kontron ThinkIO-Duo Embedded IPC**

The extremely compact Kontron ThinkIO-Duo (70mm deep / 35mm slot level) is equipped with an Intel® Core™ Duo U2500 processor with a clock rate of 2 x 1.2 GHz and 512MB or 1GB of RAM. The Kontron ThinkIO-Duo achieves exceptional performance in an ultra compact unit. The Embedded IPC for DIN rail mounting combines Intel® Core™ Duo performance and standard PC connectivity with a rugged design, which is also suitable for applications in harsh environments. Two independent processor cores allow for parallel computing. Therefore, the ThinkIO-Duo meets the requirements for demanding control and visualization tasks as well as web server and firewall applications. The system is designed to decrease the total cost of ownership for OEMs through a very reliable architecture and long term availability.

**CONTENT – Issue n° 5/2008**

- 1 Soccer player versus machine
- 4 Intelligent Power with Digital Feedback Loops
- 6 **centrotherm thermal solutions** contributes to green environment with leading SiC processing furnaces
- 10 Power Measurement, Metering & Control
- 10 Ultra low Power & Low Voltage solutions
- 14 AMC Everywhere



News: [ 1 ], [ 3 ], [ 7 ], [ 8 ], [ 9 ], [ 12 ], [ 13 ], [ 16 ], [ 17 ]

© 2008 by Eurostandard Press 2000

**Asian Representative:**

Taiwan - Charles Yang  
Tel: +886-4-3223633 charles@medianet.com.tw

managing director  
**Ionela Ganea**

contributing editors  
**Paul Svasta**  
**Ross Bannatyne**

financial director  
**Ioana Paraschiv**

web & advertisement  
**Irina Ganea**

dtp  
**Cristina Serdaru**

consulting  
**Marian Blejan**  
**Bogdan Grămescu**

**Controlled circulation:**

- |                      |            |
|----------------------|------------|
| Bulgaria             | Montenegro |
| Bosnia & Herzegovina | Macedonia  |
| Croatia              | Moldova    |
| Hungary              | Romania    |
| Serbia & Montenegro  | Slovenia   |
|                      | Turkey     |



**ESP**  
**EUROSTANDARD PRESS 2000**

Tel.: +40 31 805 9955  
Tel.: +40 31 805 9887  
Tel.: +40 72 270 7254  
Fax: +40 21 316 5233  
office@esp2000.ro  
[www.esp2000.ro](http://www.esp2000.ro)

Printing by  
**RH Printing Service srl**